



SCT-36

## FEATURE

- Split-core type with clip-on design, easy installation at set-up devices and distribution board
- Built-in circuit protection from over voltage even secondary circuit open
- Compact size works up to 500A AC
- Cost-effective solution
- Two ends hook attached to secure primary conductor with cable-ties
- Applicable for power saving facilities and overload protection systems
- Applicable for 100mA secondary output of current transformer
- Isolated plastic case recognized according to UL 94-V0

## SPECIFICATION

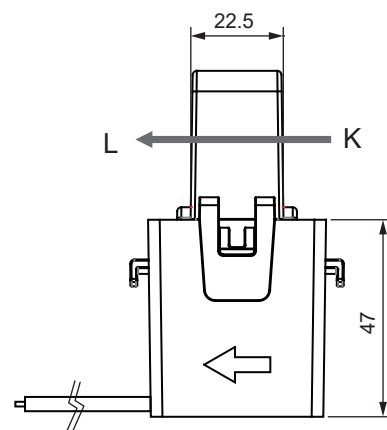
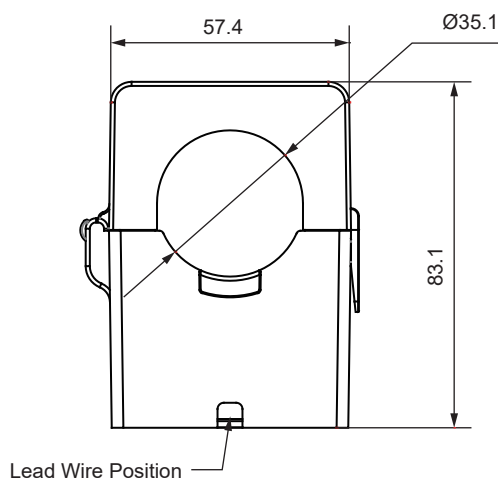
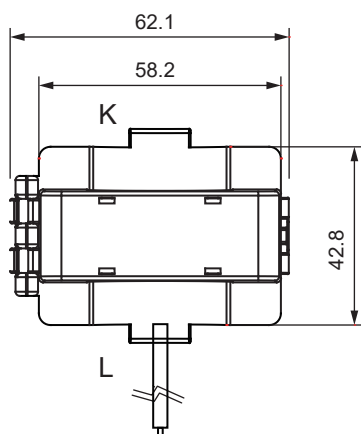
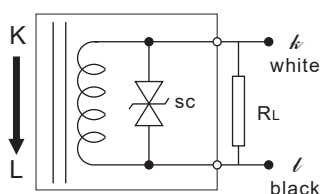
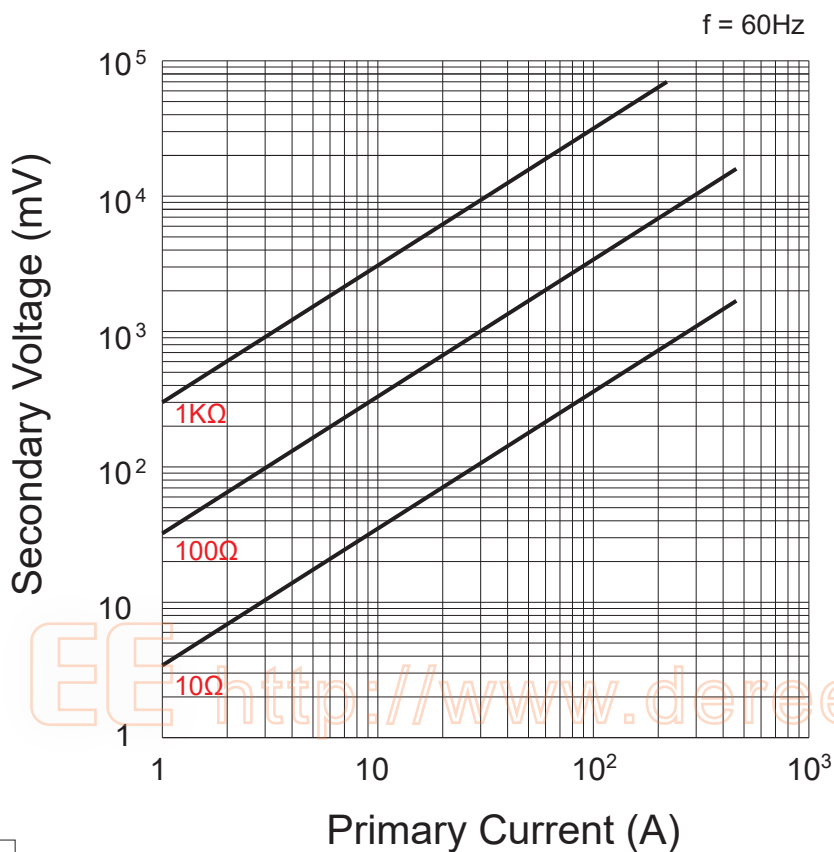
Model no.	SCT-36
Primary Current Range	5A ~ 600A RMS (50/60Hz), $RL \leq 10\Omega$
Application frequency	50 / 60Hz
Accuracy of the Linearity	CLASS 1.0 , $RL \leq 10\Omega$
Maximum Primary Current	600A RMS continuous
Primary Conductor Hole	$\varnothing 35.1\text{mm}$
Output Features	refer to graphic
Coil of Secondary Circuit	$3000 \pm 2$ turns
Coil Resistance of Secondary Circuit	$105\Omega \pm 10\%$ (at 25°C)
Enclosure Material	NYLON Flame Retardant (UL-94V0)
Output Cord Length	Typical 1.5 m 22AWG
Max circuit voltage	AC 600V
Dielectric Strength	2500V / 1mA / 1min between primary and output
Open circuit protection	10.2V
Insulation Resistance	$> 100M\Omega$ at 500V DC between primary and output
Weight	approx. 380 g
Operating Condition	-20 ~ 60°C, below 80% R.H. no condensation
Storage Condition	-30 ~ 70°C, below 70% R.H. no condensation

## Remarks:

1. The accuracy is set according to the length of attached cable and it will be affected by changing to different length .
2. For the requirement of longer output cable , please inform us .
3. Specifications and appearance may be revised if needed without any prior notice . For more product information , please contact us .

# DER EE<sup>®</sup> Split Core Current Transformer

## SCT-36 Graphic of Primary Current and Secondary Voltage



**得益工業儀器有限公司**  
DER EE ELECTRICAL INSTRUMENT CO., LTD.

台灣 新北市中和區中山路二段351號7F  
7F, No.351, Sec. 2, Chung Shan Rd., Chung Ho Dist.,  
New Taipei City 23504, Taiwan  
TEL:886-2-2226-6789(REP) FAX:886-2-2226-7979  
E-mail:deree@deree.com.tw <http://www.deree.com.tw>

